



# GAT MONTHLY MEMBERSHIP PROGRESS REPORT

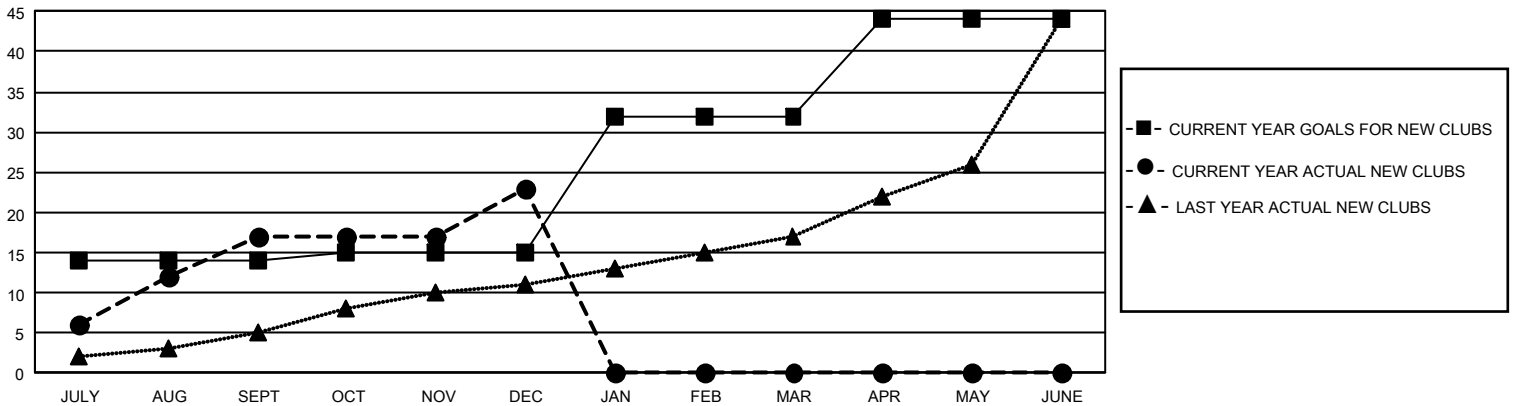
Results as of: 12/31/2025

## GMT Constitutional Area 3, Group C

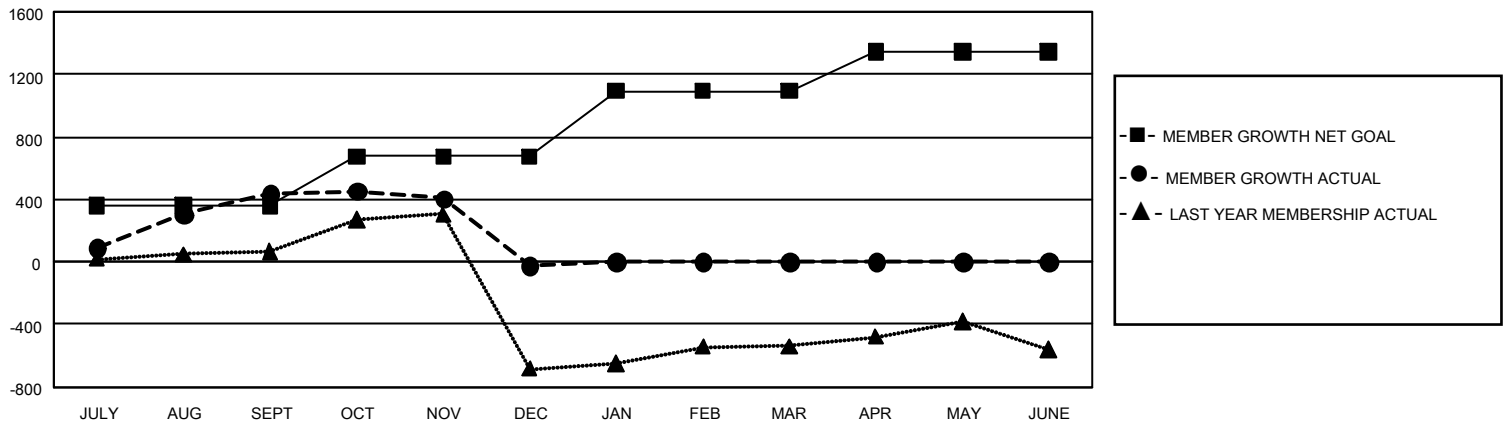
REPORT DOES NOT INCLUDE CLUBS IN UNDISTRICTED AREAS.

Clubs				Members			
RESULTS FOR 2025-2026				RESULTS FOR 2025-2026			
QUARTER	NEW CLUB GOAL	NEW CLUBS	DROPPED CLUBS	QUARTER	MEMBER GROWTH NET GOAL	MEMBER GROWTH ACTUAL	DROPPED MEMBERS ACTUAL (including transfers)
JULY/AUG/SEPT	42	17	5	JULY/AUG/SEPT	361	954	392
OCT/NOV/DEC	3	6	7	OCT/NOV/DEC	315	495	894
JAN/FEB/MAR	51	0	0	JAN/FEB/MAR	416	0	0
APR/MAY/JUNE	36	0	0	APR/MAY/JUNE	252	0	0

GOALS AND ACTUAL NEW CLUBS CUMULATIVE



GOALS AND ACTUAL MEMBERS CUMULATIVE



DROPPED CLUBS: 12

261 CLUBS OF 805 ADDED 1 OR MORE NEW MEMBERS

### GENDER DISTRIBUTION

MALE	7,714 (47.83%)
FEMALE	8,401 (52.09%)
NON BINARY	1 (0.01%)
PREFER NOT TO ANSWER	11 (0.07%)

### DROPPED MEMBERS

DECEASED	59
CLUB CANCELLED	150
OTHER	1,066
<b>TOTAL</b>	<b>1,275</b>

[CLICK HERE FOR CUMULATIVE MEMBERSHIP DATA](#)

TOTAL FAMILY UNIT MEMBERS 5,776

FAMILY MEMBERS PAYING HALF DUES 3,421